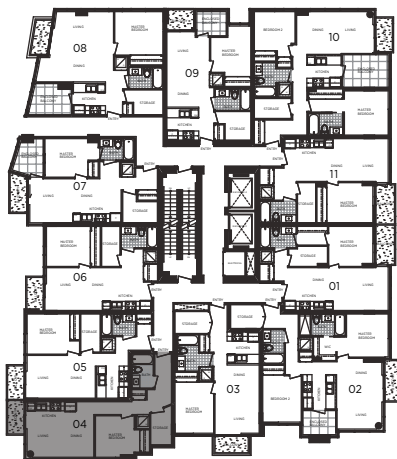


1 BEDROOM 578 SQ.FT. | TERRACE 33 SQ.FT. | TOTAL 611 SQ.FT.

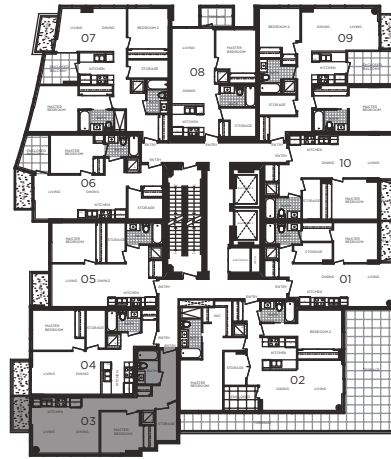
\*1 BEDROOM 577 SQ.FT. | TERRACE 33 SQ.FT. | TOTAL 610 SQ.FT.

**BUILDING C**

- 1103\*
- 1004\*
- 904\*
- 804
- 704



LEVEL 7, 8, 9 & 10



LEVEL 11



In the interest of product improvement and maintaining high standard of these homes, the developer reserves the right to make modifications and changes to plans, specifications and features. Sizes and dimensions are approximate and may vary with actual strata plan and survey.